

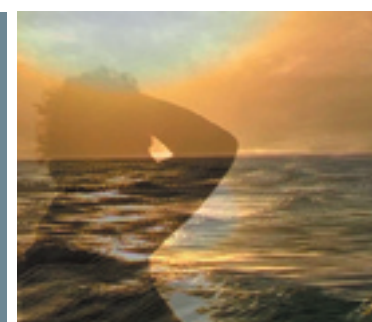
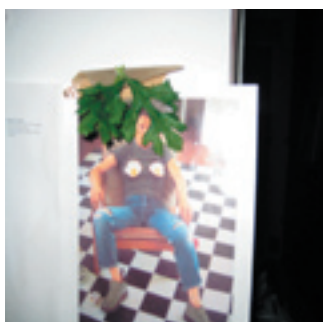
A Time Like This

Louisa Bufardeci – Bindi Cole – Lorraine Connelly-Northey – Eliza Hutchison
Wietske Maas – Kate Smith – Salote Tawale – Annie Wu

Curators: Samantha Comte – Jirra Lulla Harvey – Kate Rhodes – Meredith Turnbull

Opening Night Wednesday 16 July 6.00 – 8.00pm

Exhibition Dates 17 July to 16 August 2008



It's 100 years since women were granted the right to vote in Victoria. To commemorate the centenary of women's suffrage, the VCA Margaret Lawrence Gallery in collaboration with the National Council of Women of Victoria is pleased to present the exhibition **A Time Like This**.

Late capitalist society is so often characterised by the loss of the individual's voice and the disenfranchisement of marginal groups. In such a condition, how do we remain optimistic? How do we respond to the dilemmas we face as feminists in an ambivalent, even antagonistic, contemporary context? One way – and this has been a model adopted by women across cultures and through the ages – is to work collectively, or in collaboration with other supportive groups.

Working closely with four pre-eminent curators, contemporary artists Louisa Bufardeci, Bindi Cole, Lorraine Connelly-Northey, Eliza Hutchison, Wietske Maas, Kate Smith, Salote Tawale and Annie Wu have created ambitious new projects exploring Feminism in the 21st century – and what it might look like within art practice, and beyond.

Embracing sculpture, photography, performance, video, installation and relational practices, the works developed for this exhibition explore the subsumed histories of Indigenous and non-Indigenous Australian women, as well as addressing the current situation.

A Time Like This aims to provide a context for and promote dialogue around some of the issues women face today – such as the status of women within human rights, equal opportunities and employment, health, migration, education and communication.

A Time Like This is accompanied by a major publication with contributions by Helen McDonald, Catherine Deveney, Julia Zemiro, Fiona Hile and many others. Together with a series of talks by artists and curators, the project aims to provide an Australian perspective on the global discourse around Feminism and to look in some depth at the complex ways women artists are thinking and working today.

KEYNOTE LECTURE presented by NCWV

Emily Maguire author *Princesses and Pornstars: Sex, Power, Identity* Wednesday 13 August 6pm at Federation Hall, VCA

Artist and Curator Talks Wednesday 23 July and Wednesday 6 August 6pm in the VCA Margaret Lawrence Gallery

FOR FURTHER INFORMATION AND IMAGES Contact Meredith Turnbull or Vikki McInnes (03) 9685 9400

VCA MARGARET LAWRENCE GALLERY

40 Dodds Street Southbank VIC 3006 +613 9685 9400

vmcinn@unimelb.edu.au
www.vca.unimelb.edu.au

Gallery Opening Hours
Tues to Sat 12–5 pm



THIS EXHIBITION IS SUPPORTED BY



Australian Women's Coalition

VCA ART IS PROUDLY SUPPORTED BY



The VCA Galleries are generously supported by the Margaret Lawrence Bequest

Images, left to right: Kate Smith, Lorraine Connelly-Northey, Louisa Bufardeci, Salote Tawale. Louisa Bufardeci is represented by Anna Schwartz Gallery, Melbourne. Bindi Cole is represented by Boscia Galleries, Melbourne. Eliza Hutchison is represented by Murray White Room, Melbourne.